



FACADE SYSTEM



ROOF SYSTEM



FLOOR SYSTEM



STEEL STRUCTURE



CLEANROOM SYSTEM



COLD STORAGE SYSTEM



MODULAR HOUSING

WISKIND CLEANROOM ENCLOSURE PRODUCT COLLECTION



MUTUAL SUCCESS THROUGH SINCERITY
AND INTEGRITY

Shandong Wiskind Clean Technology Co., Ltd.

Tel:00865436968999

Web:www.wiskindcleanroom.com

E-mail:wiskind.cleanroom@gmail.com

Address:

Shandong Base: No. 800, No. 5 Xingbo Road, Boxing

Economic Development Zone, Shandong Province

Jiangsu Base: Aerospace Industrial Park, Zhenjiang

City, Jiangsu Province, P.R. China

Version:WISKIND-CLEANROOM SYSTEM(EN)-VSI-202302



Facebook



Twitter



Official website

WISKIND CLEANROOM,
FOR BEAUTY AND ETERNITY,
LEADING GREEN INTELLIGENT FUTURE.

CONTENTS

Wiskind cleanroom	02
Wiskind group	02
Wiskind cleanroom	04
Development history	06
Global layout	08
Authoritative qualification	09
R&D capabilities	10
Production management system	12
Automatic production lines for conventional products	13
Cleanroom solution	20
Cleanroom solution	20
Cleanroom panel	22
Endure®	26
HygiSteel®	28
Stainless steel waterproof wall base	30
One-piece corner panel	32
Removable panel	33
Air return wall unit	34
Cleanroom door	36
Cleanroom window	38
Cleanroom panel installation instructions	40
Professional service	42
Smart design	43
Cooperative partner	46
Market recognition	46
Our partners	54

WISKIND GROUP

Wiskind Group was established in 1978 and is headquartered in Shandong. Wiskind Group is a comprehensive modern private enterprise integrating R&D, production, engineering and technical services, warehousing and processing and capital operation. It has more than 20 branches and offices with more than 2,000 employees. At present, the wiskind's business covers five core industrial sectors: cleanroom enclosure system, R&D, production and engineering services of fabricated building steel products, high-end coated steel plate distribution services, high-precision cold-rolled steel plate manufacturing and integrated housing (modular box-type housing).

With more than 40 years of development in the industry, Wiskind Group has built several manufacturing bases in Shandong and Jiangsu, with a total area of more than 760,000 square meters. Among them, the latest digital factory benchmark project - Wiskind Yangtze River Delta Manufacturing Base (Jiangsu Zhenjiang) has been completed and put into production in 2021. Wiskind's products and services are well-known at home and abroad. The products are widely used in industrial manufacturing, medical and pharmaceutical, logistics and warehousing, modern agriculture, public buildings, transportation and commercial facilities, etc., contributing unique value to the progress and development of various industries.

Under the background of carbon neutrality, carbon peaking and the trend of digital development, Wiskind Group will actively move towards high-end intelligent manufacturing and digital industrial upgrading, Wiskind Group will insist on the corporate mission of "Wiskind cleanroom, for beauty and eternity, Leading green intelligent future."

20+

more than 20 branches

760,000+

Factory: 760,000m²

115+

More than 115 national patents

2400+

2400+ propositional employees



Shandong manufacturing base

Wiskind's headquarter and manufacturing base are located in Boxing Economic Development Zone, Binzhou City, Shandong Province, covering an area of more than 660000m². The production lines of cleanroom panels, cleanroom doors and windows, sandwich insulation panels, curtain wall panels, profiled panels and cold storage panels that adopt the world-leading equipment, technology and production management.

Shandong manufacturing base

WISKIND CLEANROOM

Shandong Wiskind Clean Technology Co., Ltd. (hereinafter referred to as Wiskind Cleanroom) is a subsidiary established by Wiskind to develop the cleanroom industry market. It focuses on the R&D and manufacturing of cleanroom enclosure systems, and the R&D, manufacturing, sales and consulting of cleanroom enclosure system. Relying on Wiskind's more than 40 years of industry R&D experience and resource integration advantages, it has become a professional cleanroom enclosure system service provider, an advocate and practitioner of modular cleanroom, and a cleanroom intelligent producer with the largest production capacity in China.

It has the world's first cleanroom panel production line with independent intellectual property rights and the world's leading automated production equipment for cleanroom door and cleanroom window. It has a complete product system and rich product categories, including cleanroom panel, cleanroom door, cleanroom window and other products. It has passed FM, CE, SGS, ISO9001, ISO14001 certification one after another.

Serving many large-scale system engineering enterprises at home and abroad, and occupying a leading edge in the fields of biomedical, food, electronics and medical industries; we have provided professional cleanroom enclosure solutions to famous companies globally.

7

7 fully automated cleanroom panel intelligent production lines

3

3 cleanroom window fully automated intelligent production lines

5,000,000+

Cleanroom panel annual capacity: more than 5,000,000 square meters

15000

Doors and windows monthly capacity: 15,000 pieces

Jiangsu manufacturing base

Located in Zhenjiang Economic Development Zone, it covers a building area of 100,000 square meters, including production lines for cleanroom panel and sandwich insulation panel. The digital benchmark factory jointly built by Jiangsu Base Office and Siemens. It is also a benchmark in the building enclosure industry, and is of great significance to promoting intelligent manufacturing in the cleanroom industry.



Jiangsu manufacturing base

DEVELOPMENT HISTORY

WISKIND CLEANROOM



1970s

Wiskind started in a small town in northern China-XingfuTown. Originally engaged in sheet metal processing industry,with superb craftsmanship in the local reputation.



1993

The Wiskind company was established, and the 5 founders began to cooperate in business.



1997

Wiskind entered some manufacturing fields such as profiled sheets, bending parts and purlins.



2003

Wiskind Steel Company and R&D Center were successively established, becoming a group company integrating R&D, manufacturing, service and trade.

1980s

Began trading and processing of hot-dip galvanized steel sheet, Wiskind is a pioneer in the industry.



1994

Leading peers to build the largest trade market for coated steel plates in northern China.

2000

The first composite panel production line was completed, and the product system was increasingly improved.



2007

Imported advanced polyurethane production lines, launched color series products, and obtained the first-class qualification of China's steel structure manufacturing enterprises.



2021

The innovation center building and the Jiangsu manufacturing base were successively completed, and the sandwich panel series obtained the three-star certification of China's green building.



2019

The clean space intelligent design system was put into use, and Wiskind (Shanghai operations center) was established.



2016

The industry's first four sides frame cleanroom panel automatic production line was successfully put into use. Steel Product Research Institute was established in Wiskind.

2020

Wiskind non-standard size automatic production line acceptance was successful.



2018

Cleanroom door and window production line has been fully put into operation, and the new cold storage panel production line has achieved a number of innovations, leading the industry and participating in the construction of national government landmark building projects.



2015

Launch a new product, One-piece R corner and thermal insulation curtain wall product-Color Germ.

2009

Obtained the national high-tech enterprise certification and participated in the construction of the German Pavilion at the Shanghai World Expo.



2010

Launch new products, four sides frame cleanroom panel.



2012

The group has begun to take shape and moved to a new location, covering an area of 700,000 square meters.



GLOBAL LAYOUT

Over the years, Wiskind has always been committed to creating value-added biopharmaceutical cleanroom enclosure system solutions for customers. The products have obtained national standards, CE, FM approval, and are exported to more than 20 countries in Asia, Europe, Africa and South America.

In China, Wiskind's sales and service network covers the whole country, branches and offices are located in 23 cities in 14 provinces, Wiskind sets up professional manufacturing and R&D bases in Boxing, Shandong, and Zhenjiang, Jiangsu to meet the supply response of domestic and foreign markets quickly.



EXPERT TEAM



Engineering Technician



Intermediate Technical Engineer



Senior Technical Engineer



Sales Service Team

AUTHORITATIVE QUALIFICATION



R&D CAPABILITIES

The building of Wiskind Innovation Center consists of a large-scale comprehensive R&D test field and a 4-story scientific research building with a total area of 5000m². It is a comprehensive building integrating R&D experiments and office functions. It is equipped with more than 40 sets of professional equipment and can realize 32 experiments such as architectural physics and organic chemistry, structural mechanics, clean space, etc., is one of the most authoritative and complete laboratories in the industry. Wiskind establishes strategic partnership with Baosteel, Yehui, BlueScope, Maanshan Iron and Steel, BASF and many other high-end brand suppliers, and set up joint innovation laboratory; Wiskind provides complete testing and testing conditions for the development of high-quality building products. Wiskind has obtained professional certification from China Construction Metal Structure Association.

Metal material detection

- Coating flexibility
- Tensile strength
- Coating thickness
- Plating thickness
- Color difference detection
- Pencil hardness
- Coating adhesion
- Salt spray resistance, acid and alkali resistance
- UV lamp aging performance

Product inspection

- Bond strength
- Peel properties
- Bending capacity

Auxiliary material detection

- Rock wool density
- Thermal conductivity
- Compressive strength
- Oxygen index
- Smoke density
- Hydrophobicity

Solution detection

- Moisture content
- Bond strength

- One of the most authoritative and complete laboratories in the industry.
- Equipped with more than 40 sets of professional equipment.
- Testing materials up to 32 items.
- Establish strategic partnership with more than 20 high-end brand suppliers.



PRODUCTION MANAGEMENT SYSTEM

LEAN MANAGEMENT MODEL

With the continuous development and expansion, Wiskind introduced and implemented TPM in 2007 to create a factory management system and management method with replicable capabilities, which greatly improved the modern management level of the enterprise.

According to the statistics, since the company implemented TPM management, the product qualification rate

has increased from the initial 95% to 99%, and 19,127 cases have been improved, creating or saving economic benefits accumulatively of about 5 million USD. The company has become a benchmark enterprise for factory construction in the region. Many enterprises in and outside the province have come to visit and study, and have undertaken many factory management training courses, which have won more honors and recognition for the company.

2007

Introduced and implemented TPM (total production and maintenance) management in 2007

99%

The product qualification rate has been increased from the initial 95% to 99%

19,127

19127 improvement cases in total

5,000,000

5,000,000 create or save economic benefit in total

QUALITY MANAGEMENT SYSTEM CERTIFICATION

In recent years, the company has continuously promoted the extension of quality management to the whole supply chain and the whole product life cycle by strengthening the quality management system certification. Up to now, the company has passed the certification of 1509001:2015 international quality management body ISO 15014001:2015 international environmental management system and gb/t45001-2020 occupational health and safety management system.

The company has obtained American FM certification (certificate for entering the global market), indicating

that the products or services have passed the testing of the highest American and international standards. The company has obtained the EU CE certification, which indicates that the product or service has passed the compliance assessment and certification in the fields of quality, health and safety, environment and social responsibility.

At the same time, the company also took the lead in obtaining the production license and QS quality safety mark issued by the State Bureau of quality and technical supervision in the same industry in China.



Passed ISO9001:2015 international quality management system



Passed ISO 15014001:2015 international environmental management system



Passed GB/T45001-2020 occupational health and safety management system certification



Obtain production license and QS quality safety mark

AUTOMATIC PRODUCTION LINES FOR CONVENTIONAL PRODUCTS

AUTOMATIC PRODUCTION LINE FOR CONVENTIONAL PRODUCTS

The cleanroom panel continuous production system independently developed by Wiskind has reached the international advanced level, with a total length of more than 150 meters. It includes: rolling hot pressing system, rockwool board automatic cutting system, automatic glue spraying system, double track temperature control system, robot palletizing system.

The system has a high degree of automation, fast processing efficiency and stable product quality. The maximum annual production capacity reached 2 million square meters per year. It can produce a variety of cleanroom panels with different core material. The birth of the automatic production line of cleanroom panel has subverted the industry's understanding of the traditional production process of cleanroom panel.



MANUFACTURING PROCESS

01

Rockwool board automatic cutting system

The independently developed rockwool board slitting equipment is cut by high-precision saw blade, and the thickness error is controlled within 200 μ m (the diameter of a hair wire is 80 μ m). The rockwool is staggered, which greatly improves the strength of the cleanroom panel.

02

Rolling hot pressing system

Rolling hot pressing system, with multiple motors operation synchronously, to ensure that the panel forming accuracy is controlled within 0.5mm. The panel processing width and thickness can be automatically adjusted according to customer requirements.

03

Automatic glue spraying system

The frequency converter control ensures that the glue is accurately fed according to the proportion, and is completely and evenly attached to the plate surface, ensuring the high-strength bonding of the product.

04

Double track temperate control system

The combination of double track circulating hot pressing process makes the cleanroom panel evenly heated and perpendicular to the four sides to guarantee the installation accuracy.

05

Robot palletizing system

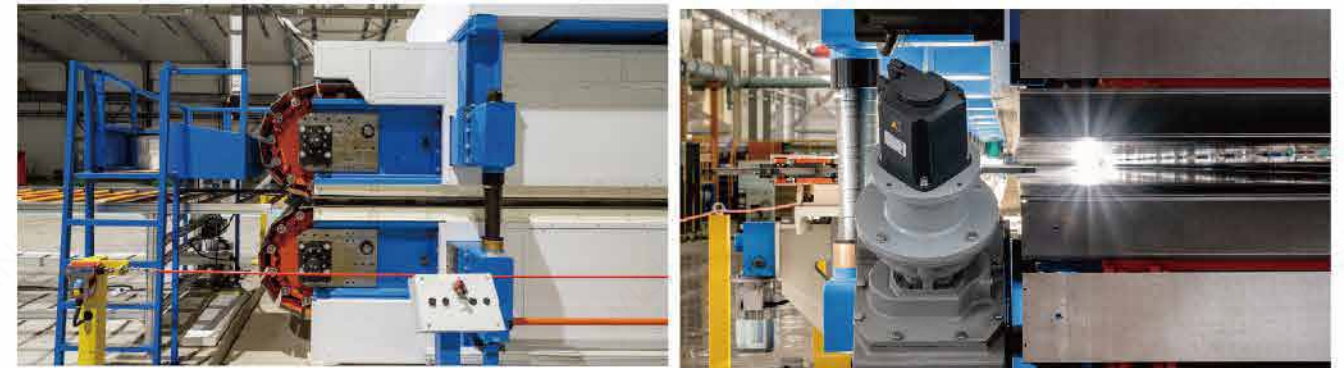
The fully automated robot is used for stacking at a faster speed, which is more efficient. Through accurate measurement and intelligent control, the precision, strength and flatness of the cleanroom panel greatly improved.

DOUBLE TRACK HOT PRESSING SYSTEM

It adopts the high-end imported equipment from Robor, Italy. The double track is equipped with a solid steel structure frame, which is heat treated to ensure the dimensional stability during production. The super long double track ensures the flatness of the product. The heating is carried out by two complete independent systems, and the upper and lower tracks are sealed with heat shields to ensure that the production process reaches the required temperature. In order to avoid deflection deformation, a fixed base is equipped every 2.5 meters.

Characteristic:

1. Advanced design for long-term and large-scale intensified operation
2. Outstanding manufacturing accuracy
3. Precise and unique assembly materials
4. Excellent synchronous operation
5. Ultra long stable operation
6. Control system matching digital management



Flexible automatic production line

Wiskind intelligent automatic production line is composed of 8 modules: steel plate leveling, intelligent design, intelligent layout, automatic laying-off, automatic bending & forming, precisely glue distribution, composite pressing and finished product stacking, with a total length of more than 170 meters.

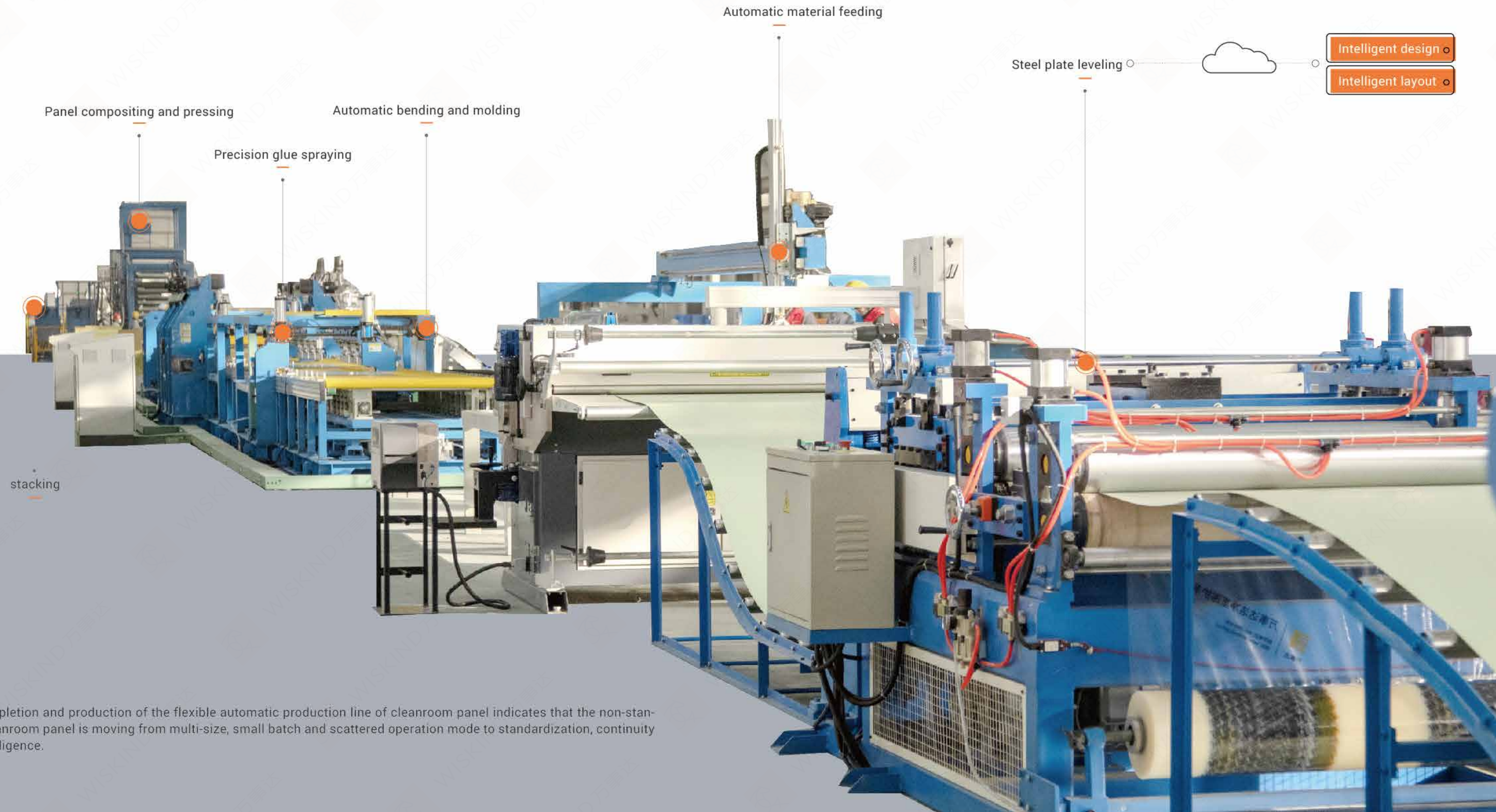
In the whole production process, there is no need for manual calculation, measurement and operation adjustment. The whole process of automatic production subverts the non-standard traditional production process, improves the material utilization rate, reduces manual input, greatly improves the precision, strength, flatness and aesthetics of the cleanroom panel, and makes the product quality more stable.

8

All eight steps are automated

170+

The total length is more than 170 meters



The completion and production of the flexible automatic production line of cleanroom panel indicates that the non-standard cleanroom panel is moving from multi-size, small batch and scattered operation mode to standardization, continuity and intelligence.

DYNAMIC PRODUCTION LINE

Cleanroom Door Automation Production Line



Numerical control tower



Fiber-optic laser output



Internal swing type double-head cutting



Independent electric heating medium circulation



On-site foaming molding

Cleanroom Window Automation production line



The whole production line is composed of composite and sealant installation. The full automatic production line, subverts the traditional cleanroom window production process, improves material utilization rate, reduces manual input, and greatly improve the accuracy, air tightness and beauty of cleanroom window. Faster processing speed, higher product quality. Leading the domestic cleanroom window production industry and become the industry model.



Improve material utilization



Faster processing



Cleanroom window accuracy improved



The quality of the product is higher

BIOMEDICAL CLEANROOM SYSTEM SOLUTION

Wiskind continues to explore new materials, new technologies and new solutions to provide customers with overall solutions for the cleanroom enclosure system in the biomedical industry, covering partition walls, ceiling, door, window and profile, etc., we use the spirit of craftsmanship to polish products, the courage to technical innovation. Wiskind does everything for customers' convenience, trust and glory.



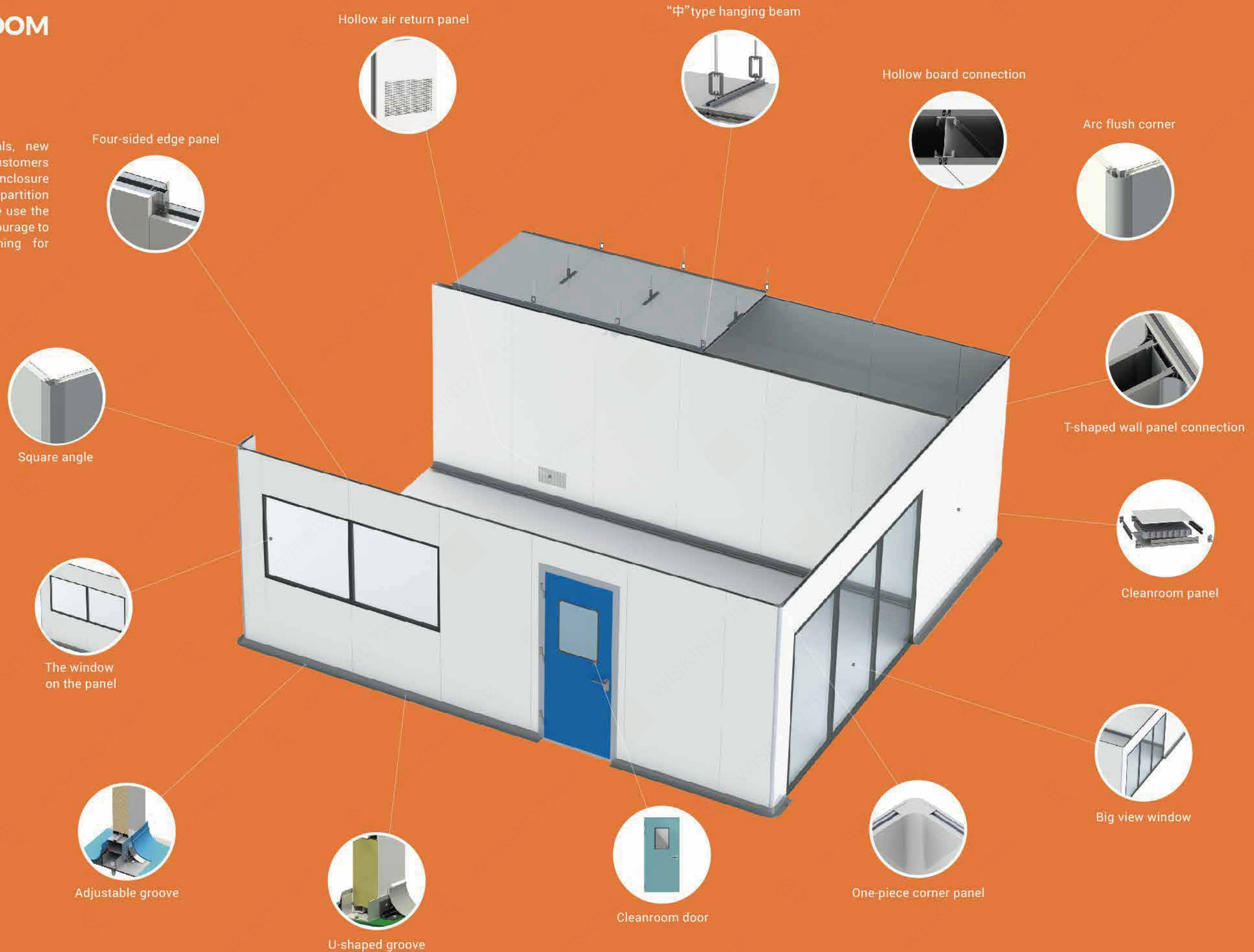
Can provide customized or modular envelope design, intelligent design to complete the facade paper and 3D design scheme, to achieve accurate structure construction scheme to reduce indoor cracks and leakage risk.



Good at the use of different material characteristics, designed for customers to meet the style needs of the whole factory extension scheme, industrial aesthetics to make the production process environment more friendly.



With the process equipment and user's habits, we will have a reasonable optimization, to maximize the practical operation of users.



Square angle



The window on the panel



Adjustable groove



U-shaped groove



Cleanroom door



One-piece corner panel



Big view window



Cleanroom panel



T-shaped wall panel connection



Arc flush corner



Hollow board connection



"中" type hanging beam



Hollow air return panel

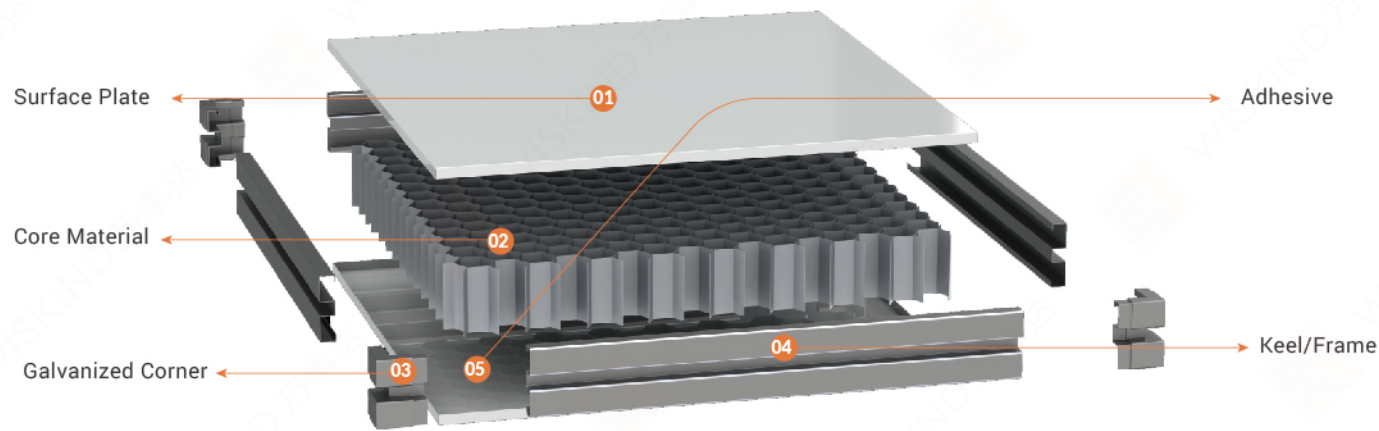


Four-sided edge panel

CLEANROOM PANEL

Cleanroom panel, also known as purification panel, by color coated steel plate, aluminum alloy panel and other materials as panels, with rockwool, gypsum board, glass magnesium board, aluminum honeycomb and other core material composite, product performance is excellen suitable for all kinds of indoor environment requirements, is an ideal clean room envelope material.

Wiskind cleanroom panel selects high-quality raw materials, high-level design scheme ensures the excellent functional characteristics and quality of products, better meet the personalized needs of customers, wiskind cleanroom panel has high strength, excellent fire performance, convenient installation and smooth appearance.



PRODUCT FEATURES

01. Beautiful appearance

Flat surface, for customers to create a beautiful, comfortable working environment.

03. Prefabrication

Modular construction, can be assembled, improve the construction efficiency, reduce the artificial influence.



02. Excellent performance

Unique dust-proof, anti-static, antibacterial, sound absorption, sound insulation, fireproof and bending resistance bearing capacity performance.

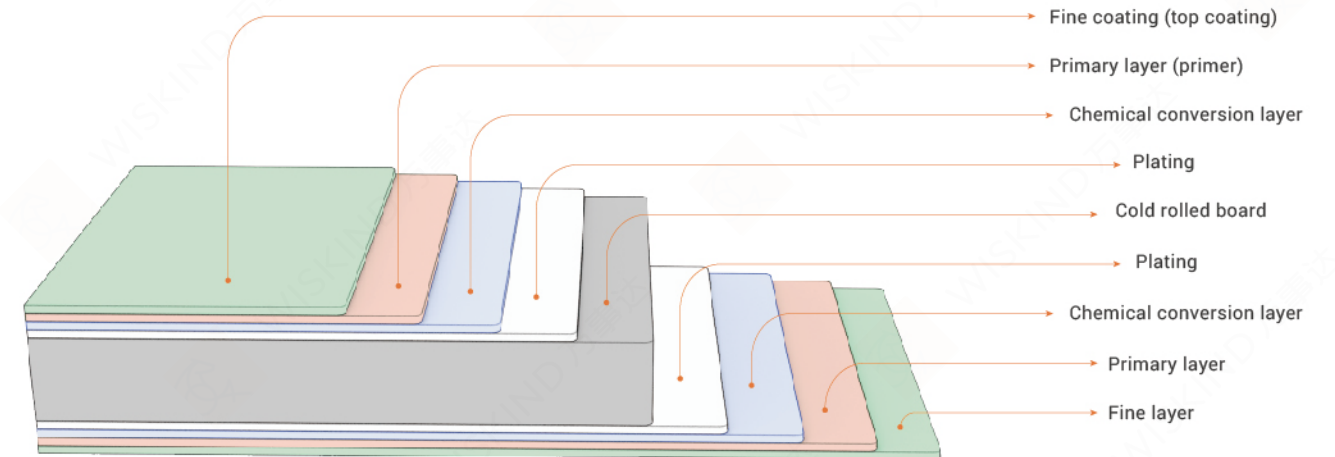
04. Customization

Production can be customized according to the different needs of customers.

SURFACE MATERIAL

Color coated steel plate

To create practical and beautiful biological pharmaceutical cleanroom, Wiskind adopts domestic high quality color coated steel plate, the color coated plate uses the cold rolled steel plate (galvanized plate, hot galvanized plate or aluminum zinc plate) as the substrate. The production of plate will go through several processes: Firstly, degreasing, phosphorization, Ming acid; then, treatment of continuous organic coating; last, baking and cooling of the plate. So, the plate becomes high strength, good corrosion resistance and beautiful appearance.



STAINLESS STEEL PLATE

The stainless steel plate is an iron-based alloy steel containing more than 12% chromium content. Stainless steel in a narrow sense refers to steel that is not easy to rust in the atmosphere, and stainless steel in a broad sense refers to steel that is resistant to corrosion in acid, alkali and salt under specific conditions. Wiskind uses stainless steel with a thickness of 0.5/0.6mm, a width of 1000/1200mm, a surface material of 304/2B, a frosted front, and a color-coated back, which has chemical resistance and lower gloss. The design is more beautiful.

CORE MATERIAL

High quality hydrophobic rockwool

The high quality hydrophobic rockwool used by Wiskind is high quality basalt, dolomite as the main raw materials, the melting temperature can reach 1000°C, after special waterproof treatment, not moisture absorption, hydrophobic rate can reach more than 98%, fire-resistant and moisture-proof laid an important foundation for the durability of biopharmaceutical cleanroom building.



ADHESIVE

High quality rock cotton

Our selected adhesive is certified by SGS standard, conforming to European EN71 Part3 Environmental Standard, baked at -20°C to 60°C for 12 hours with 100 repeated cycles and no decline in glue bond strength.

Two-component polyurethane adhesive belongs to recurrent adhesive. The two components solidify and bond, which can meet the requirements of structural adhesive. The dosage of the two components can be adjusted within a certain range, the formula is flexible, and can be combined with the product bond strength demand ratio.



CLEANROOM PANEL

The company provides and develops a series of materials for cleanroom buildings. The series solutions include rock wool cleanroom panel, cleanroom MGO and rockwool panel, gypsum rockwool cleanroom panel, aluminum honeycomb cleanroom panel and paper honeycomb cleanroom panel. And for the biological medicine series launched Endure and Higysteel two series. Provide more options for customers.



- 01. Rockwool cleanroom panel
- 02. MGO&Rockwool cleanroom panel
- 03. Gypsum&Rockwool cleanroom panel
- 04. Aluminium honeycomb cleanroom panel
- 05. Paper honeycomb cleanroom panel

PRODUCT SPECIFICATIONS

Item	Specification parameters (mm)
Width	980/1,180
length	Wall panels 100-9,000, and ceiling panels 100-3,500
Thickness	50/75/100
Panel thickness	0.4-0.6
Panel material	Color-coated steel plate, Aluminum alloy plate, Stainless steel plate, Ti-Zn plate
Face coat	PE (polyester), PVDF (fluorocarbon), HDP(high durable polyester)
Core material	Rockwool (bulk capacity: 100-120kg / m ³) glass and magnesium, gypsum, paper honeycomb, aluminum honeycomb
Thickness of keel	0.6-0.8
Corner	0.5 (Galvanized)
Resist film	60μm / 80μm

Note: Non-standard specifications can be customized according to customer requirements.

SURFACE MATERIAL

Item	Rock wool core plate	Magnesium rock wool core plate	Plaster rock wool core plate	Aluminum honeycomb core
Plate weight	18/m ²	17-23 kg/ m ³	-	10-15kg/ m ³
Core material	100-120kg/m ³	5mm	9.5mm	-
Sound transmission loss	25db	30db	30db	18db
Bend	1.1KN/m ²	1.25KN/m ²	1.25KN/m ²	1.0KN/m ²
Coefficient	-	1.033	-	-
Hydrophobic rate	≥98%	-	-	-
Fire endurance	45min	60min	60min	41min

Note: The weight of the plate is calculated by 50mm plate thickness



ENDURE®

The Endure panel is mainly used for the production of biological products, blood products, and vaccines in the clean rooms class B area. It can be used in the environment of VHP disinfection, alcohol wiping, and bromogeramine wiping. It is a special panel for biological cleanrooms.



A special product for VHP disinfection

PRODUCT SPECIFICATIONS

Item	Specification parameters (mm)
Width	1,180
Thickness of panel surface	0.55
Zinc content	195g/m ²
Coating thickness	120um
Panel surface material	Hot melt adhesive film

Note: The final interpretation right of all parameters belongs to the technical center.

PRODUCT FEATURES

01.

VHP resistant disinfection

It can meet the requirements of VHP space disinfection and surface alcohol wipe disinfection.

03.

The wear resistance

In the process of panel transportation, construction, installation and use, reduce wear and tear, and reduce the panel scratch.

4
FEATURES

02.

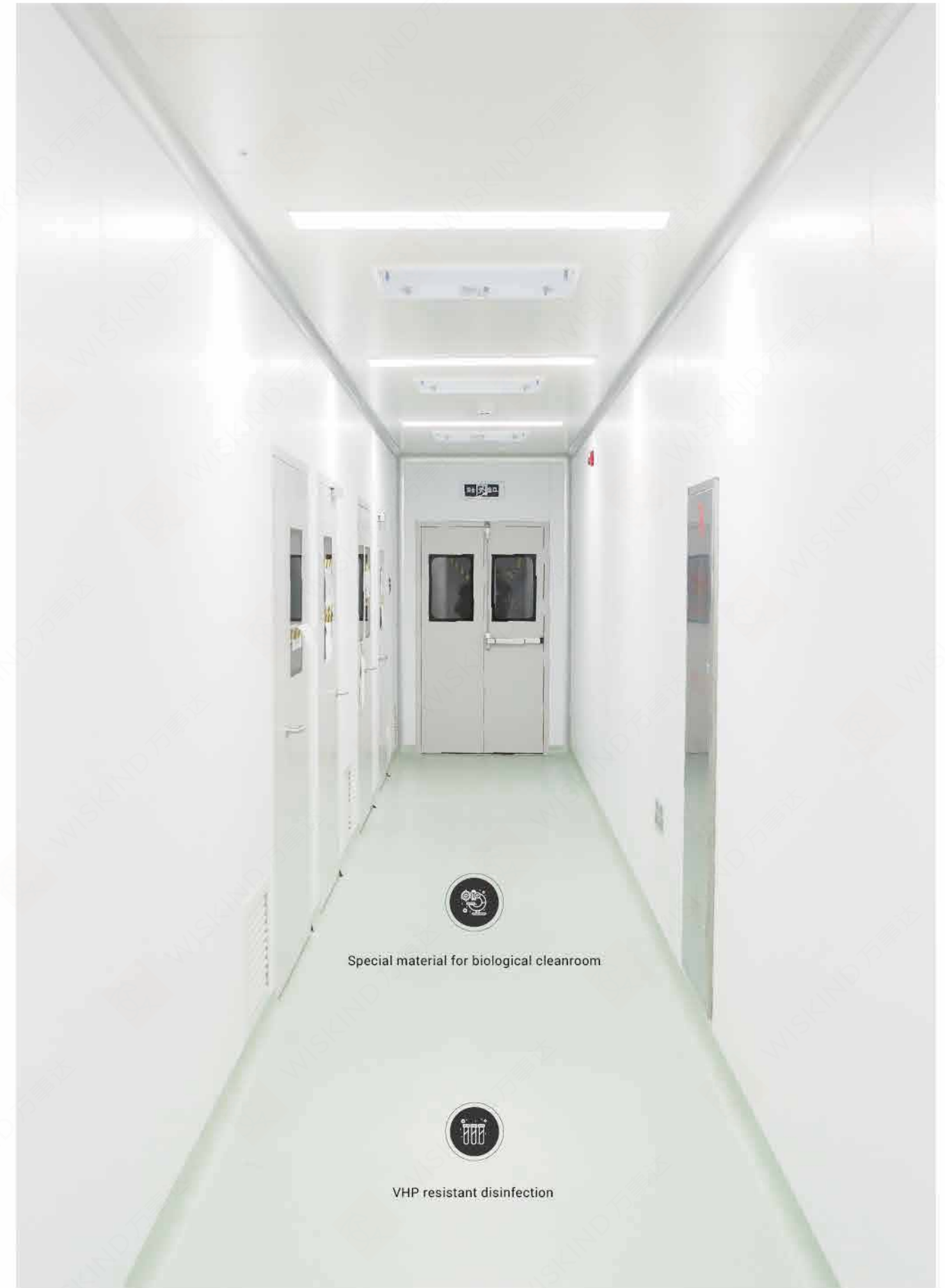
Good formability

Meet the steel plate bending processing performance, to ensure that the paint coating is not damaged, prolong service life.

04.

Environmental friendly

Small color difference, low gloss, reduce visual fatigue caused by glare, improve working efficiency and yield.



HygiSteel®

With the development of the cleanroom industry and the increasing requirements for materials, Wiskind and Baosteel have established a joint innovation laboratory with the launch of HygiSteel products for the cleanroom space. Nordic colorists customize the color palette to better match the white glue color.



The more suitable color for cleanroom

PRODUCT FEATURES

01.

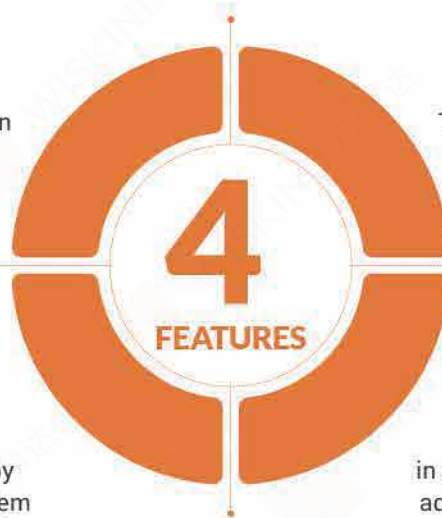
Glossiness reduced by 42.9%

Reduce visual fatigue caused by clean room glare, low gloss surface diffuse reflection, more comfortable vision.

03.

Color difference control level increased by 60%

The whiteness of HygiSteel is increased by 4 units, and the color difference control level is increased by 60%, which perfectly solves the problem of visual color difference in the use of standard products commonly existing in white customers.



02.

Flatness increased by 66.7%

The cleanroom panel adopts sandwich composite production process, which has strict requirements for the flatness of color steel plate.

04.

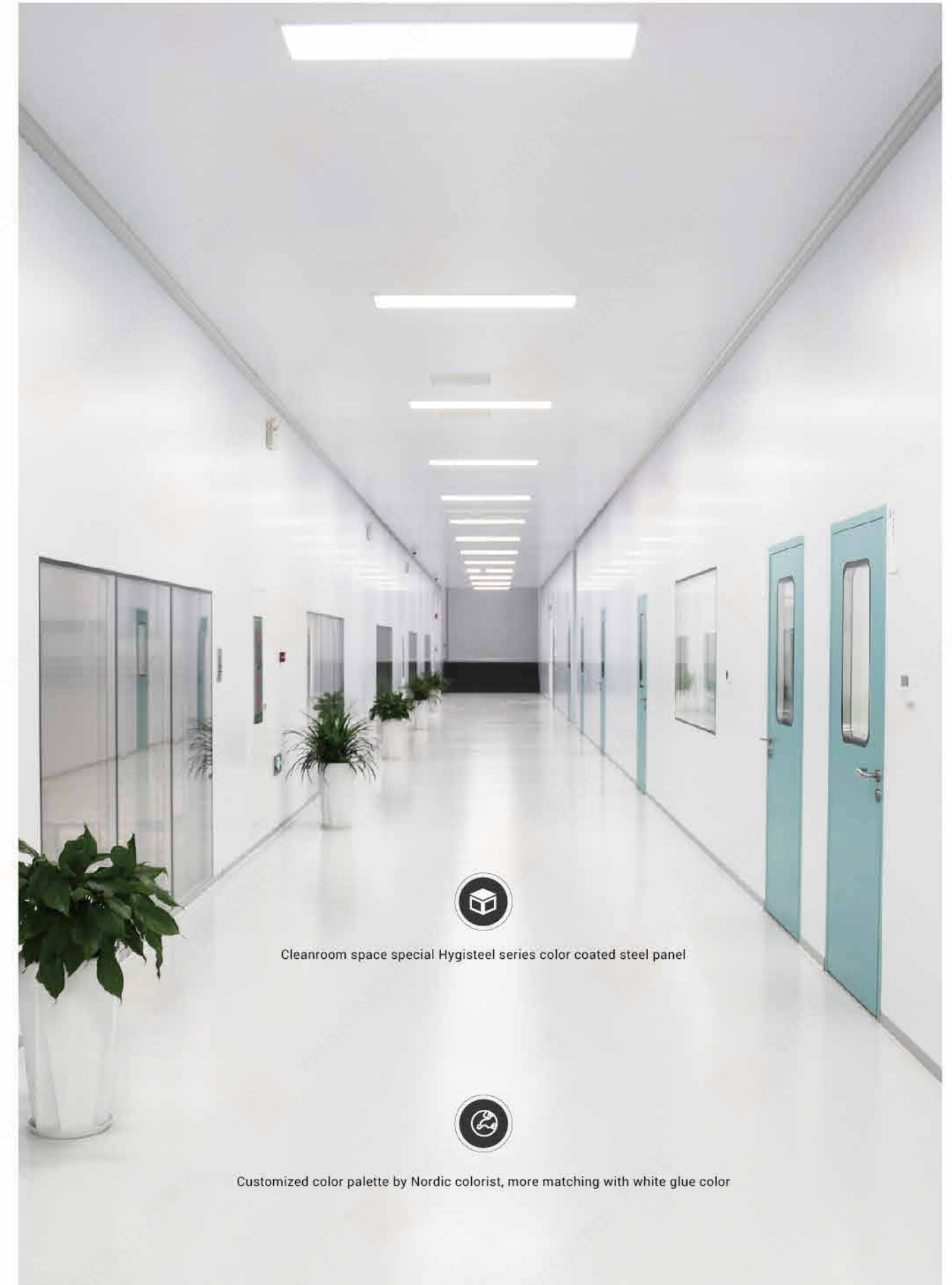
Antiviral activity rate >90%

HygiSteel achieved a breakthrough in color coated steel plate, in the coating added silver ion Ag+ and antiviral factor, antiviral activity rate >99%.

PRODUCT SPECIFICATIONS

Item	Specification parameters (mm)
Width	980,1180
Thickness of panel surface	0.5
Zinc content	120g/m ²
Surface coating	PE,PVDF
Coating thickness	23um
Glossiness	20±5
Panel type	2mm (Maximum wave height 2mm)

Note: Non-standard specifications can be customized according to customer requirements.



Cleanroom space special HygiSteel series color coated steel panel



Customized color palette by Nordic colorist, more matching with white glue color

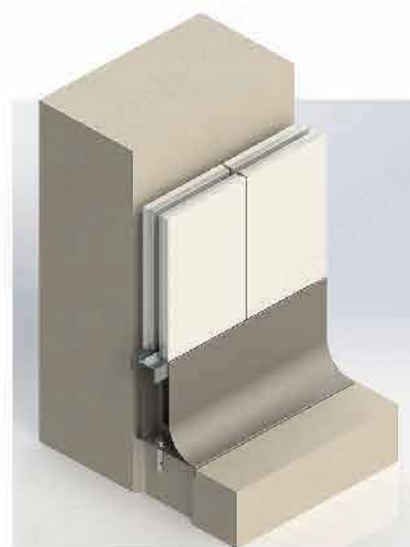
STAINLESS STEEL WATERPROOF WALL BASE



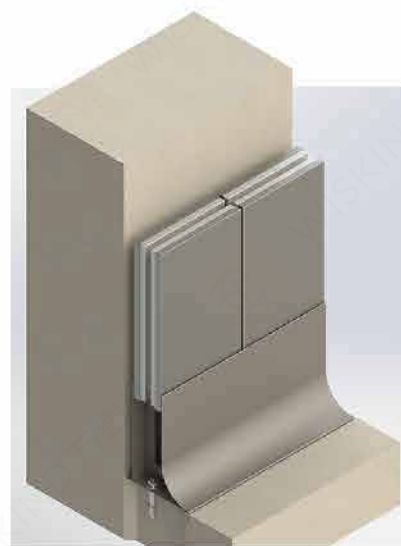
01. Waterproof wall base with stainless steel panel



02. Waterproof wall base with color-coated panel



03. Waterproof wall base single arc continuous color coated panel



04. Waterproof wall base single arc with stainless steel panel



05. Waterproof wall base with hanging panel

The stainless steel waterproof wall base is a solution to the problems of waterproof wall base and bacteria breeding in the corner of the food processing area. The stainless steel waterproof wall base is made of 304 stainless steel, which is integrally pressed, welded and polished. It has a good waterproof effect in corners, columns and other areas, and is a new type of waterproof wall-based product.

PRODUCT SPECIFICATIONS

Item	Specification parameters (mm)
Appearance height	160
Bottom width	180
Materials	304 stainless steel
Outer stainless steel	1
Middle positioning stiffener	1.5
Ground slotting	3*15

Note: Non-standard specifications can be customized according to customer requirements.

PRODUCT FEATURES

01. Corrosion of products such as acid and alkali, blood, etc., the product has a long service life. The waterproof effect is good, which greatly reduces the cleanroom panel caused by scouring. It is widely used in food processing areas, including scouring, cleaning, disinfection, etc. Problems such as bulging, peeling paint, etc. required place.

03. Beautiful and generous, high reusability, the wall panels are tightly combined, without gaps, to prevent the growth of bacteria.

02. Stainless steel is strong, grouted inside, no gaps, it has great product features.

04. Easy and flexible installation.

4
FEATURES

ONE-PIECE CORNER PANEL



01
T-shape corner

02
Right-corner

03
Round-corner

PRODUCT SPECIFICATIONS

Item	Specification parameters (mm)
Width	The sum of the widths of both sides not exceed 1180mm, unilateral not less than 100mm, suggest equilateral 315mm*315mm
Maximum length	6,000
Thickness	50/100
Thickness of panel surface	0.4-0.6
Panel surface material	Color coated steel plate, Aluminium alloy plate, Stainless steel plate, Ti-Zn plate, endure, hygisteel
Surface coating	PE, PVDF, HDP
Core material	Rockwool(Bulk density 100-120 kg/m ³)
Frame thickness	0.6
Corner	0.5(Galvanized)
Protective film	60um/80um

Note: The final interpretation right of all parameters belongs to the technical center.

PRODUCT FEATURES

01. The corner position is smooth and flatness, no joint transition, the interface is more rigorous, eliminate air leakage and joint dust accumulation phenomenon, convenient cleaning and disinfection.

03. Combined with wiskind's patented detachable technology, one-piece corner panel can be disassembled separately for daily maintenance, convenient and flexible.

4
FEATURES

02. One-piece corner panel is specially insulated to effectively avoid the thermal bridge effect common in traditional corners.

04. One-piece corner panel is a patented product of wiskind.

REMOVABLE PANEL

In the process of construction and use of cleanroom panel will inevitably appear local damage and need to be replaced and maintained. In addition, due to the change of process equipment, the layout adjustment of the cleanroom needs to remove local walls. But the traditional cleanroom panel is difficult to do local disassembly, and the construction party and the owner are often troubled by these problems. Wiskind's rapid detachable technology solves this problem.





PRODUCT SPECIFICATIONS


Item	Specification parameters (mm)
Width	980/1,180
Maximum length	Maximum length 9000mm, the ceiling panel not exceed 3000mm
Thickness	50/75/100
Thickness of panel surface	0.4-0.6
Core material	Rockwool(Bulk density 100-120 kg/m ³), MGO board, Gypsum board, Aluminium honeycomb, Paper honeycomb
Frame thickness	0.6-0.8
Corner	0.5(Galvanized)


Note: The final interpretation right of all parameters belongs to the technical center.

PRODUCT FEATURES

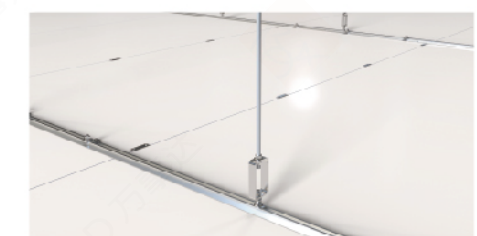
 No need to remove all the walls, reduce the cost of replacing the panel, more cost-effective.

 This product is more suitable for cleanroom equipment reserved port and reserved vulnerable places.

 No color difference, improve the overall clean room aesthetics.

 The technology was granted China national patent in 2-15 years.

REMOVABLE CEILING PANEL



AIR RETURN WALL UNIT

Wiskind has improved the installation efficiency and connection mode of air outlets. This solves the difficulties of the traditional return air unit, for example: occupies a large area, has poor sealing effect, is easy to reveal core material and is difficult to construct.

Wiskind 100mm hollow air return wall panel replaces the return air column and 100-thick hollow spring wall in the buffer room for clothing, and the average return air volume is 500m³/h, which improves the use of cleanroom space.

The return air module is prefabricated in the factory, and the direct installation on site is convenient and fast, and the construction efficiency is improved.



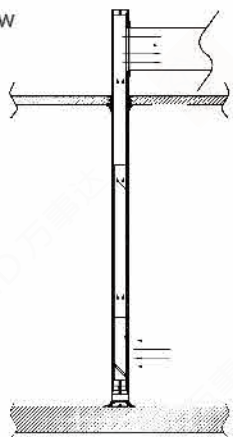
PRODUCT SPECIFICATIONS

Item	Specifications (mm)
Width	980/1,180
The maximum length	6,000
Thickness of panel surface	0.5
Panel surface material	Color-coated steel plate, Stainless steel plate, Endure Plate, VCM PE (polycool), PVDF (krypton carbon), HDP (weather-resistant polycool)
Core	Gypsum(12mm), Aluminum honeycomb
Average return air volume (width 1180mm)	500-1000m ³ /h
Average return air volume (width 980mm)	400-800m ³ /h
Protective film	60um/80um

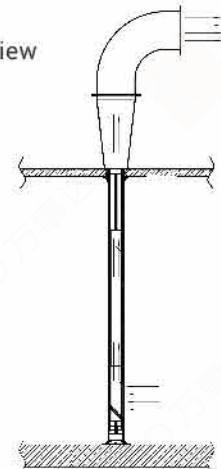
Note: Non-standard specifications can be customized according to customer needs.

INSTALLATION NODE

Vertical view



Side view



Factory prefabricated
Spliced on site easy and
Fast installation



Flush louvers are
More beautiful

CLEANROOM DOOR

Wiskind has launched three cleanroom door product series for biomedical solutions: steel door, HPL door, and color steel door.



01
Steel door

02
HPL door

03
Color steel door

STEEL DOOR

PRODUCT FEATURES

- Using high-quality mirror zinc steel plate (304 stainless steel plate), high strength, strong and reliable, anti-corrosion.
- The surface electrostatic resin powder is not sprayed (stainless steel surface is treated with sand), which has strong weather resistance and corrosion resistance.

PRODUCT SPECIFICATIONS

Item	Specifications (mm)
Standard size	Single door 900*2100 1000*2100; Unequal door 1200 *2100; Double door 1500*2100 1800*2100
Door frame steel plate thickness	1.2/1.5
Door leaf steel plate thickness	0.8/1.0/1.2
Door leaf thickness	50
Internal filling	Flame retardant paper honeycomb / Aluminum honeycomb / Rockwool
View glass edge color	Black/White
View glass edge style	Outer straight inner round/ Outer round inner round/ Outer straight inner circle

HPL DOOR

PRODUCT FEATURES

- The door leaf surface material is composed of HPL board, which is resistant to bacteria, and can withstand frequent disinfection treatment by pharmaceutical factories.
- According to the characteristics of HPL board, Wiskind launched the pin edge process to make the HPL board and the aluminum alloy door frame.

PRODUCT SPECIFICATIONS

Item	Specifications (mm)
Door leaf material	HPL board
Door leaf thickness	3/4
Door frame thickness	50
Door leaf thickness	50
Internal filling	Flame retardant paper honeycomb/aluminum honeycomb
View glass edge color	Black/White
View glass edge style	Outer round inner round

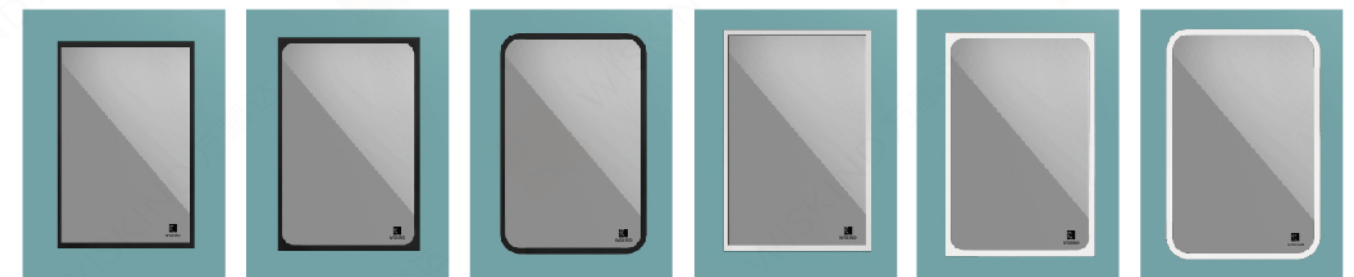
COLOR STEEL DOOR

PRODUCT FEATURES

- The door frame and door leaf are made of high-strength aluminum alloy cutting and splicing corners, with a more refined appearance, improved strength and corrosion resistance.
- The door leaf is made of color steel plate, no holes, no dust accumulation, and easy to clean.

PRODUCT SPECIFICATIONS

Item	Specifications (mm)
Door leaf material	Color steel plate / mirror zinc plate electrostatic resin powder coating
Door leaf thickness	0.5/0.6
Door frame thickness	50
Door leaf thickness	50
Internal filling	Flame retardant paper honeycomb/Aluminum honeycomb
View glass edge color	Black/White
View glass edge style	Outer straight inner round/ Outer round inner round/ Outer straight inner circle



Black straight outside

Black outer straight inner circle

Black outer straight inner circle

White straight outside

White outer straight inner circle

White outer straight inner circle

CLEANROOM WINDOW

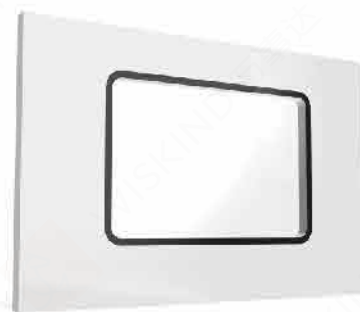
Cleanroom windows are specially launched for the biomedical industry: large floor-to-ceiling windows, small floor-to-ceiling windows, and on-panel windows. It can be customized according to different needs of customers.



01.
Large floor-to-ceiling windows



02.
Small floor-to-ceiling windows



03.
On-panel windows

PRODUCT FEATURES

01.
It can be equipped with elastic clips, patented design of clips, flexible installation, can realize the installation scheme behind the window of the clean workshop

02.
High light transmittance to ensure visual penetration. The glass burst rate is low. UV transmittance is low. Landing performance is great, the appearance is more beautiful.

03.
Three seals, the arc position is folded and the transition is smooth, so as to ensure that there is no choke point around, and the sealing performance is good.

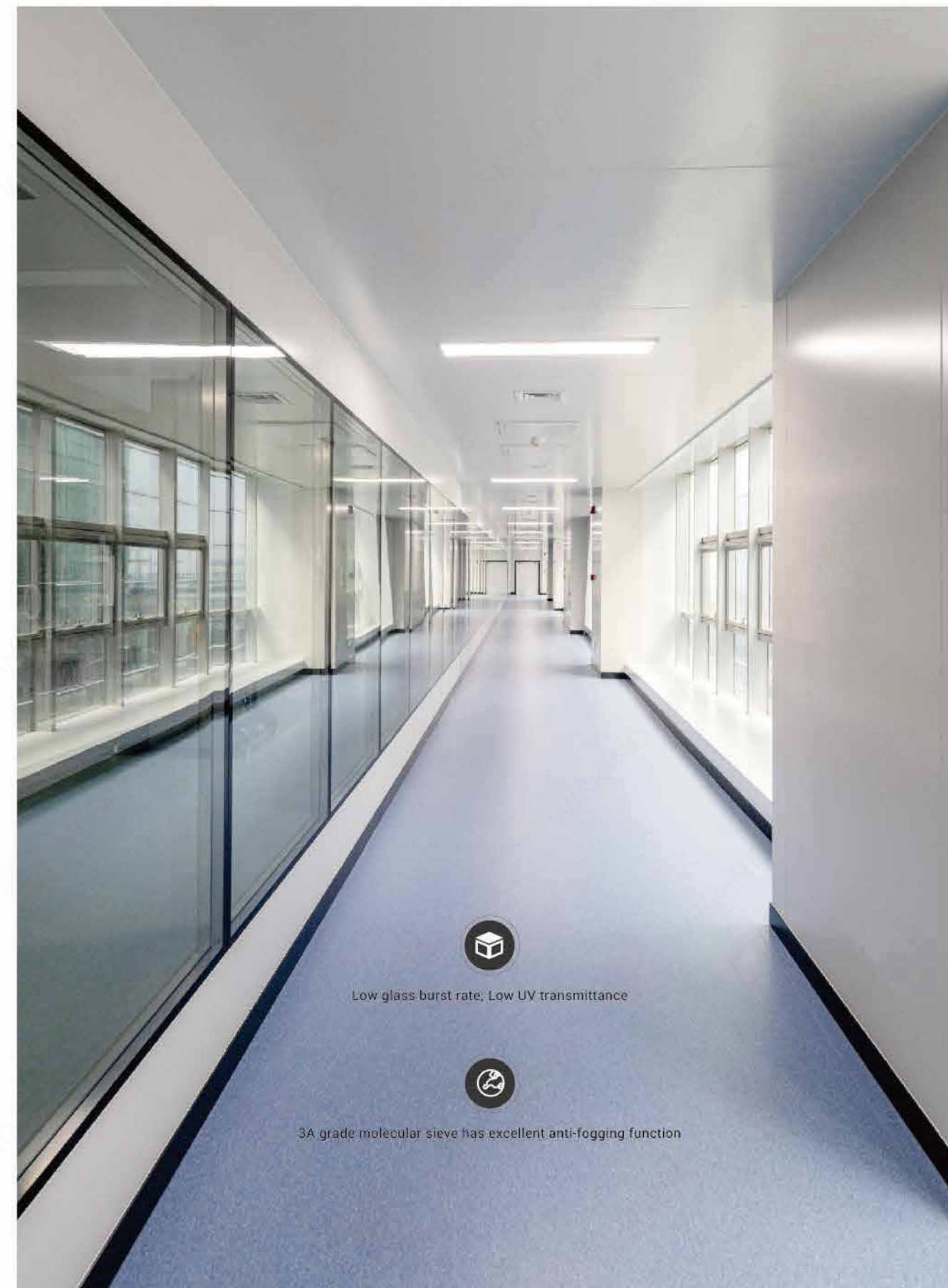
4
FEATURES

04.
3A molecular sieve react with the air in the cleanroom window through the gaps on both sides to ensure the anti-fogging performance of the cleanroom window.

PRODUCT SPECIFICATIONS

Item	Cleanroom window parameters (mm)
Specification	1180x1200, 2363x1200
Glass	Tempered glass, Ultra-white tempered glass, Fireproof glass, Dimming glass
Form thickness	50/75/100
Window frame	Aluminum alloy profile / Stainless steel
Edging	Outer straight inner straight, Outer straight inner round, Outer round inner round
Internal filling	3A molecular sieve

Note: Non-standard specifications can be customized according to customer needs.

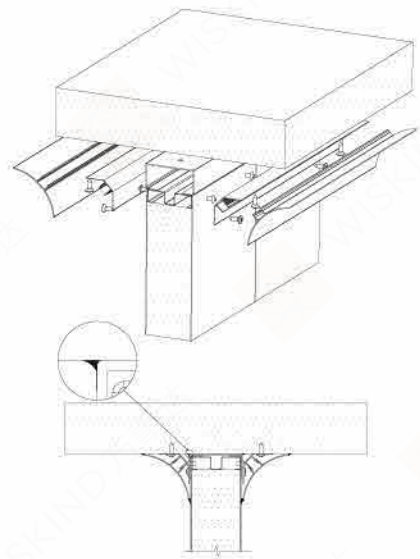


Low glass burst rate; Low UV transmittance



3A grade molecular sieve has excellent anti-fogging function

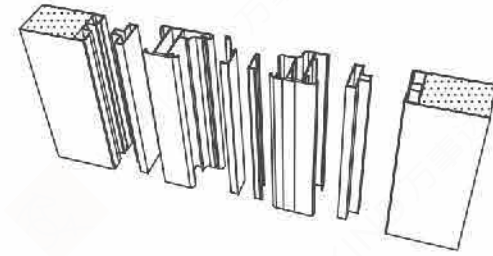
CLEANROOM PANEL INSTALLATION INSTRUCTIONS



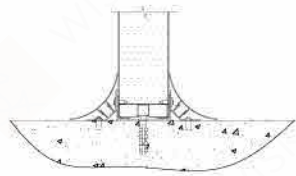
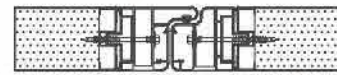
Wall to ceiling connection



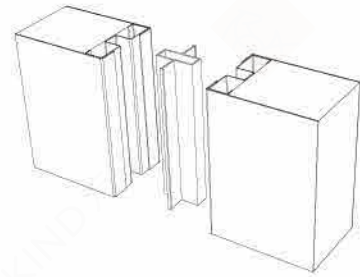
Suspended ceiling node



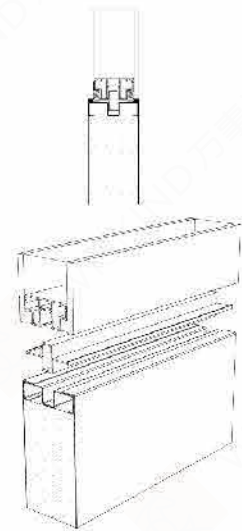
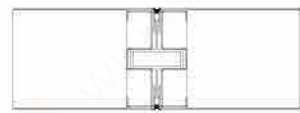
Wall to door



To track nodes



Wall to wall connection



Wall to window



PROFESSIONAL SERVICE

DESIGN

Analyze the overall design plan of the cleanroom project, understand the actual needs of customers, optimize the design of the cleanroom enclosure system, and calculate the product usage and cost.

REACH COOPERATION

Wiskind optimized design scheme and layout design drawings have been confirmed by the client or the construction party, and relevant business terms have been agreed upon. The two parties signed a supply agreement, and Wiskind was ready to prepare materials for production.

MANUFACTURING

The production order is released according to the progress of the customer's cleanroom project. The factory arranges production according to the order specification, quantity, technical requirements and delivery time, and realizes seamless quality control in the whole process from raw materials to processing and finished product inspection to ensure stable product quality.

SHIPPING DELIVERY

Cooperating with large domestic logistics companies, the models are complete, and the transportation network covers the whole country. Standardized packaging and loading procedures ensure safe and efficient delivery of products.

CONSTRUCTION GUIDANCE

Equip the project with professional installation guidance engineers to ensure accurate construction and proper installation, and coordinate to solve unexpected problems at the installation construction site.

USE AND MAINTAIN

Equipped with a professional after-sales problem handling center, information registration and filing of completed projects, regular return visits to the usage, and one-to-one efficient handling of problems arising.



Smart Design

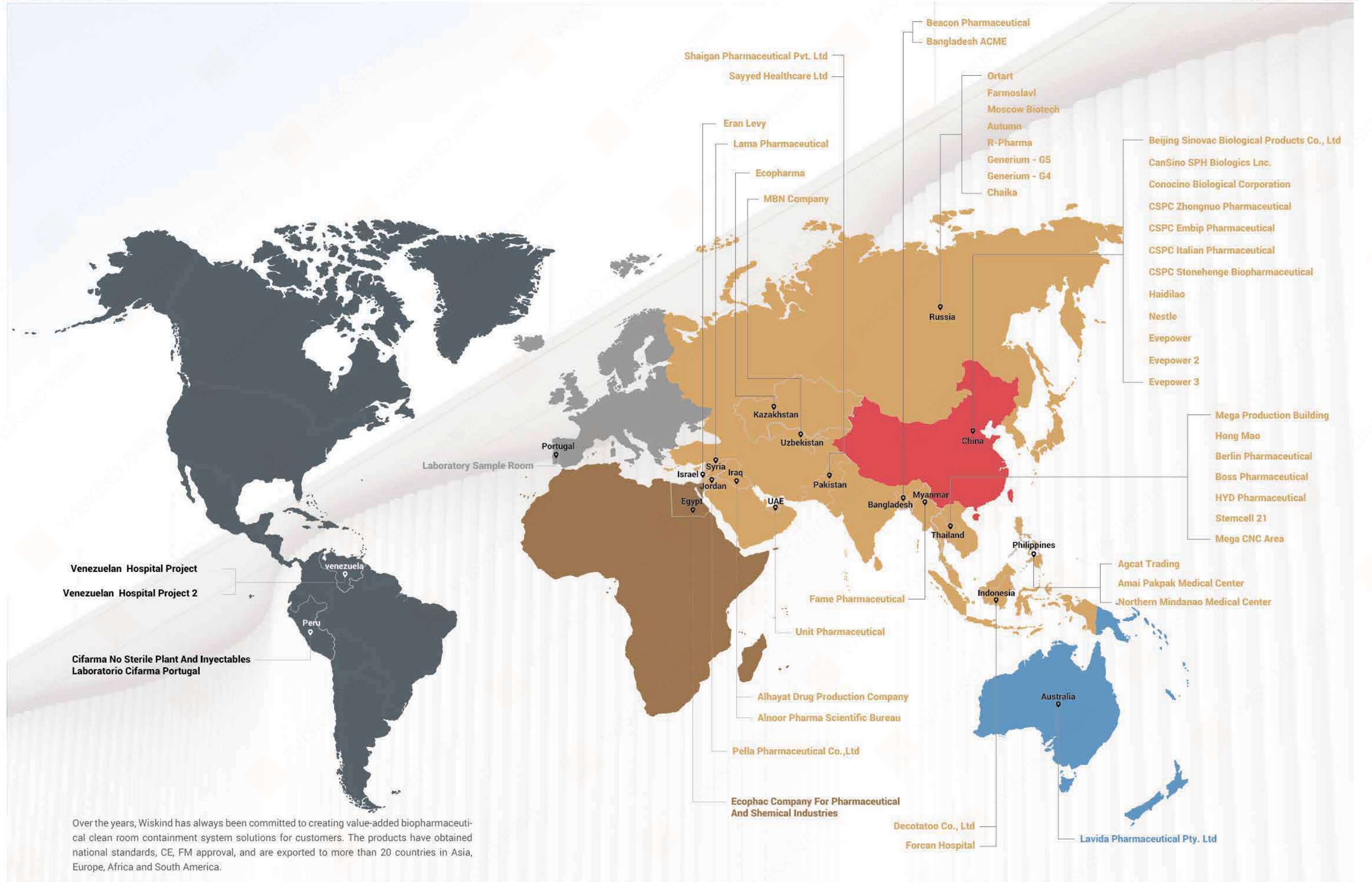
Relying on the analysis of massive engineering typesetting data in big data centers, Wiskind has a cleanroom intelligent design system. This system can intelligently design various functions and areas. At the same time, the color matching system can match different colors of cleanroom panel, cleanroom door, cleanroom window, floor, aluminum profile and glue. The features of this system are: 3D effect, intuitive feeling, high accuracy, convenient dynamic adjustment and fast response. It provides good support for cleanroom enclosure system.

Marketing center: to convey the customer's needs to the company at the first time.

Contract performance department: timely delivery, contract signing, material list confirmation, production scheduling, tracking production nodes, etc., to provide efficient delivery capability.

Technology center: take technology research and development as the service support, and intelligently plan various functions and areas according to different environments and needs.

We hope to deliver such a value to customers: quality and professional services are not only reflected in the cooperation process, but also in the solutions we provided to customers.



Over the years, Wiskind has always been committed to creating value-added biopharmaceutical clean room containment system solutions for customers. The products have obtained national standards, CE, FM approval, and are exported to more than 20 countries in Asia, Europe, Africa and South America.

MARKET RECOGNITION



CanSino Biologics Inc.,

Products: cleanroom panel, cleanroom door, cleanroom window

CanSino Biologics Inc. is an innovative biopharmaceutical company dedicated to exploring best solutions to the prevention of diseases through cutting-edge research & development, advanced manufacturing and commercialization of innovative vaccine products for human use worldwide.



MARKET RECOGNITION



Biocytogen

Products: cleanroom panel, cleanroom PVDF steel door, cleanroom window

Biocytogen is an international biotechnology company with innovative technologies driving the development of new drugs.

According to the needs of the use environment, the project adopts the double gypsum rockwool cleanroom panel, PVDF cleanroom steel door and cleanroom window produced by Wiskind. The surface of the cleanroom steel door is sprayed with PVDF electrostatic resin powder, which is of excellent quality, resistant to VHP disinfection, durable, antibacterial and clean.



MARKET RECOGNITION



CSPC Pharmaceutical Group Limited

Products: cleanroom panel, cleanroom door, cleanroom window, one piece corner

CSPC mainly owns two business segments of finished drugs and bulk drugs, with innovative drugs as the core development strategy. CSPC currently has a strong product portfolio in the therapeutic areas of nervous system disease, oncology, anti-infective and cardiovascular disease.



Based on years of industry experience, Wiskind cleanroom technology designed and produced solutions for this project. The highlights are as follows: There are no arc profiles at the inner corners, and all are right-angle structures. The outer corner positions are all right-angle corner plates. Corridor, great room wall top to seam. Large floor-to-ceiling windows in the hallway. The corridor is double-glazed. No inner corner edge.



MARKET RECOGNITION



Shenyang 3S BION INC.,

Products: Endure® cleanroom panel, air return wall

Shenyang 3S BION INC., is a leading biopharmaceutical enterprise integrating R&D, production and sales, dedicated to the research and development of genetically engineered recombinant protein drugs.



Endure® cleanroom panels are resistant to VHP sterilization, have excellent chemical resistance and excellent extensibility, are easy to clean and are safe and environmental friendly. With the air return wall instead of the air return column, it saves space, is flat and beautiful, and creates a cleaner and safer production space.



OUR PARTNERS



COMMITTED
TO THE
CONVENIENCE
AND THE PRESTIGE OF
OUR CUSTOMERS